

1. 7. 93

Dear Stefa,

The project "A Rebours" is getting more and more precise but I need a little bit more time to give you a precise list of all the elements - I think that everything will be quite clear end of July -

But I already send you a few notes in French - And the final map for the three rooms -

The first one will be red and dark, (kind of Baton rouge atmosphere) - and with Chinese lanterns -

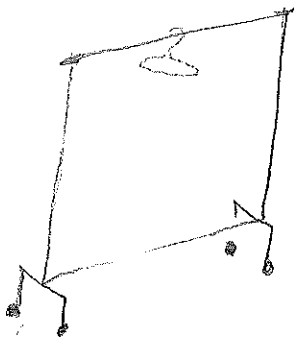
The second one is bright white and yellow and the third one blue-green a bit apatic with the light of television with a program - Here is already a list of things I will need for sure -

I hope everything is going fine with the building - I write again soon -

Bien Amicalement - Dominique

- ① Red Room - - Red painting for the walls and the ceiling -  
 - Red lanterns  
 - different sorts of wall paper in small patches -

- ② Yellow Room - One yellow wall (Painted)  
 the rest white -  
 Mison paper (adhesive).



- 1m x 2,50 -  
 A Black/white copy machine to make big posters - like 90x60cm (Machines for architects) -  
 a very simple metal thing for clothes -

- ③ Blue/Green Room - Painting on the walls -  
 a television (for the light) -  
 A piece of carpet (mopette) -  
 A bit smaller than the room -

1.7.93

notes

A rebours

Appartement/trois pièces d'une ou un célibataire.

Célibataire informé, cultivé, inquiet, fin de siècle, esthète...

Huysmans: toutes les fins de siècle se ressemblent.

L'habitation la plus caractéristique des années 90 dans le monde occidental, c'est l'appartement destiné à une seule personne, plus exactement la demeure du célibataire.

Il y aura trois pièces (voir plan)

1- la salle rouge, murs rouges, lampes/lampions/lanternes rouges, différents papiers peints sur les murs, cliché d'excitation sensorielle.

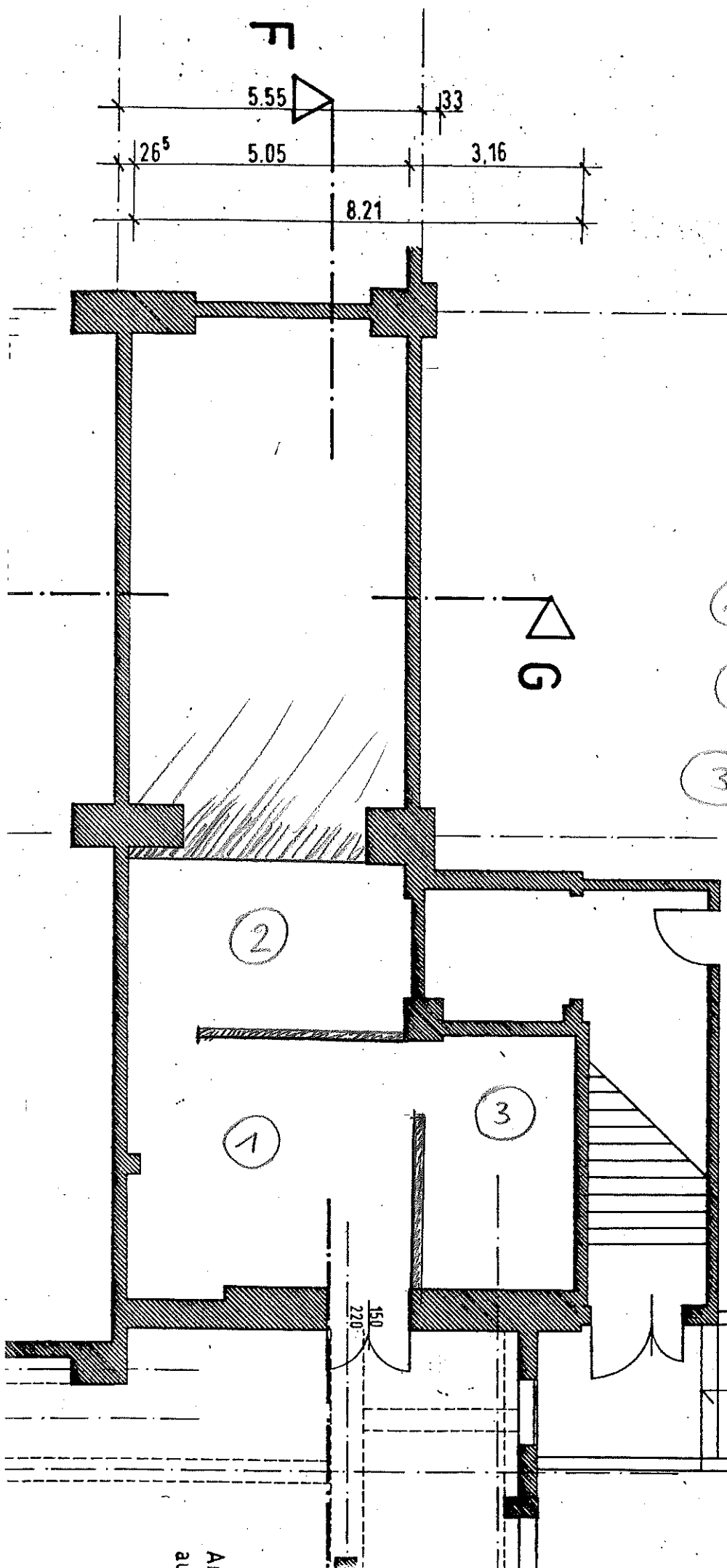
2- la chambre jaune et blanche, ascétique, dépouillée, orientée sur des questions d'identité, papier miroir, posters, quelques vêtements.

3- la bibliothèque/bureau bleu-vert avec son tapis, sa télévision qui ne s'éteint jamais, des morceaux de livres, des programmes, des journaux.

Un éclairage et une ambiance particulière pour chaque pièce.

*des posters, peu de mobiliers, une  
télévision sans programme, des morceaux  
de livres, de journaux -*

RUNDRISS ERDGESCHOSS



F

5.55

33

26<sup>5</sup>

5.05

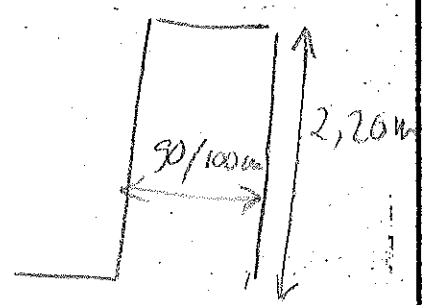
3.16

8.21

G

- ① Rod / black
- ② Yellow / White
- ③ Blue / Green -

No doors  
between the ( )  
3 spaces -  
just an entrance



Al  
al

21.7.93

Dear Stefan, Corina and Barbara,

You will find enclosed a more precise list of what would be necessary for every room. I hope it will all be possible and not too expensive, otherwise let me know, so that I can try to change the plans.

I might also bring a few things myself from Paris and buy one or two things in a second-hand furniture shop in Hamburg. So it could be good to have a small list of these shops and I could visit them when I arrive.

I hope everything is going fine for the catalogue.

Did you get any money from the AFAA?

I plan to arrive around the 1st, maybe earlier, let me know when the space is ready - I can't wait!

Bien Anicalement / Liebste Grüße

Dominique

PS: I won't be in Paris from the 25 to the 8/10 of August.

A REBOURS/1993 - HAMBURG

THREE ROOMS

1- RED ROOM

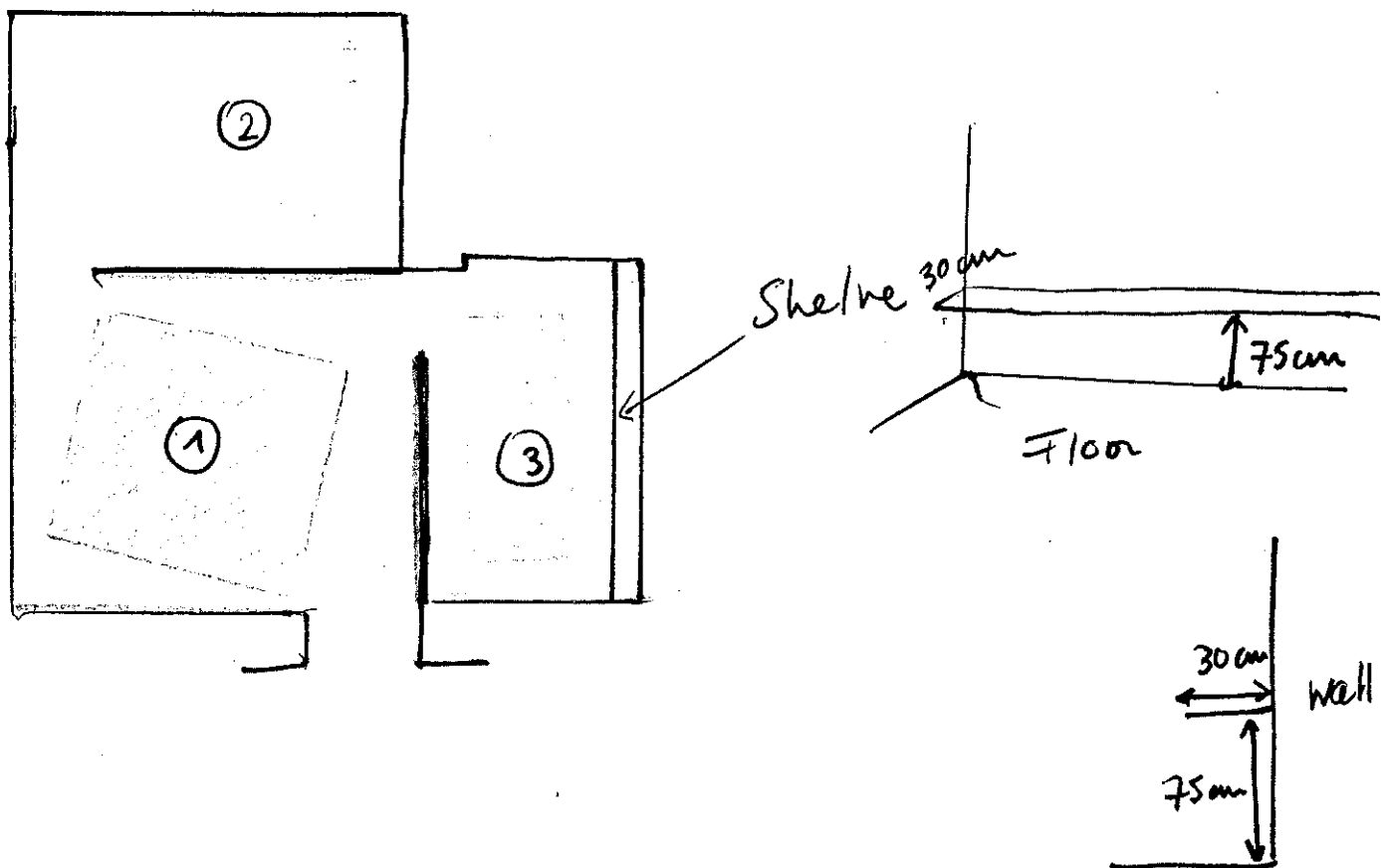
walls and ceiling painted red (a red between Pantone 185 and 206) *Mat*  
Red floor carpet, a square 4x4 meter, it should be close to the color of the walls but not necessarily exactly the same red  
Red lanterns, paper or chinese quite big 0 40 or 50 centimeter, 6 or 7, if you don't find them in Hamburg, I could buy some in Paris  
In this room, there will be other small objects and also maybe clothes that I will bring from Paris.

2- YELLOW/WHITE ROOM

white ceiling, part of the walls in white and part in Yellow (Pantone 115)  
Adhesive mirror, 1 meter or 90cm large and 2,50 high *Mat*  
Yellow carpet, two squares 2x2m  
a metal stand for clothes  
a place for big B/W copies, 7/10 copies (*Xerox for Architects*)-  
60x90cm and 90x120cm

3- BLUE/GREEN ROOM

*Glossy*  
Blue/green walls and ceiling (Pantone 331)  
a light blue carpet 2x4m, like a bathroom carpet (not too flat)  
a television (white if possible) no programm needed just the snow effect  
a very long shelve, as long as the room, painted like the walls, 30 cm deep  
and B/W *Xerox* copies and magazines...



A REBOURS / 1993.